

PERSONAL NAVIGATOR

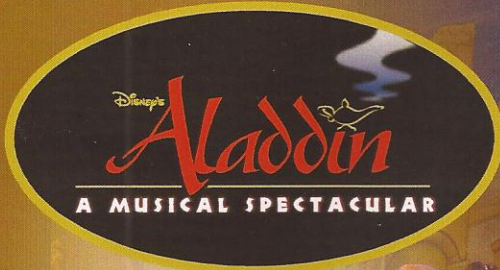


SUNDAY, APRIL 22, 2012

Sunrise: 6:40 a.m. Sunset: 7:17 p.m.
Evening Attire: Formal Attire

Sunday: Partly Cloudy High: 73°F/23°C
Monday: Partly Cloudy High: 82°F/28°C

DAY AT SEA



New to Disney Cruise Line,
"Disney's Aladdin - A Musical Spectacular"

A fast-paced, musical comedy based on the beloved animated film.

Aladdin, the "street rat" of Agrabah, meets a wise-cracking Genie, battles the evil Jafar, and falls in love with the beautiful and spirited Princess Jasmine. Disney storytelling at its best.

Assistance available at the entrance to the Walt Disney Theatre 30 minutes prior to show time.



WALT DISNEY THEATRE
Decks 3 & 4 Forward
6:15 PM & 8:30 PM

EARTH DAY

Disney Fun Facts

Tonnage: 130,000 Gross Tons

Height: 216 Feet

Length: 1115 Feet

Important Dates

Name Announcement: March 10, 2009

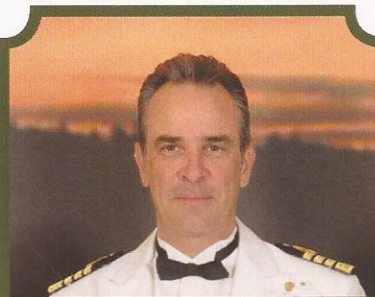
Steel Cutting: March 16, 2010

Keel Laying: February 11, 2011

Delivery: February 9, 2012

While the cute baby elephant, Dumbo serves as a fantastic stern character, in real life he would have to gather 24,266 other adult male African elephants to match the weight of the Disney Fantasy.

Almost 4 football fields in length, the Disney Fantasy is longer than the height of the Eiffel Tower in Paris (1,063 feet). She is also longer than the height of New York City's famous Chrysler building (1,047 feet).



CAPTAIN'S RECEPTION

Enjoy an exclusive photo with Captain Marco, meet some of the ship's officers and enjoy a cocktail. With live music provided by Fine Whines.

5:00 & 7:30 p.m.
Lobby Atrium,
Deck 3, Midship

Don't Miss:

Longest Drive

9:00 a.m., Golf Simulator (18+), Deck 13, Aft
Challenge your fellow cruisers, and the Golf Simulator, and see who has the longest drive!

Disney Animation: Illusion of Life - Creating a Character

9:45 a.m., D Lounge, Deck 4, Midship
Go behind the scenes at Walt Disney Animation Studios as Walt Disney himself talks about his most famous characters, then learn the basic techniques of drawing Mickey and Donald in this fun and interesting enrichment program.

Art of the Theme Show Tour

4:00 p.m., Meet at Meridian (18+), Deck 12, Aft
(Repeated throughout the cruise)
A walking tour that highlights the ship's design of Disney culture, theming and artistry.

Family Cabaret: Lloyd Mabrey

7:30 p.m., The Tube, Deck 4, Aft
Featuring the Music & Comedy of Lloyd Mabrey, as he entertains the entire family in this fun-filled show.



Visit Shutters for all your photographic needs, from Digital cameras, batteries, binoculars and accessories. All photos taken during this cruise will be available for viewing on our photo kiosks at Shutters Digital, as well as in your photo folder at Shutters, Deck 4, Midship.

DINNER MENU

Animator's Palate: Pacific Rim Cuisine
Enchanted Garden: Continental Market Cuisine
Royal Court: French Cuisine

DRINK OF THE DAY

Mai Tai (Alcoholic)
Coco Bali (Non Alcoholic)

IMPORTANT NUMBERS

Fire/Security: 7-3001
Medical Emergency: 7-3000
Health Center: 7-1923

FAMILY ACTIVITY HIGHLIGHTS

WAKE UP WITH DISNEY JUNIOR

D Lounge, Deck 4, Midship - 9:00 a.m.

What happens when you experience unlimited fun with your favorite Disney Junior shows? An exciting dance party designed especially for pre-schoolers ages seven and under.



JACK-JACK'S INCREDIBLE DIAPER DASH

Lobby Atrium, Deck 3, Midship - 11:00 a.m.

Calling all baby cruisers! The Disney Fantasy's babies take to the mat to see who's the fastest crawler of the seven seas!

FAMILY CRAFTS - SCRAPBOOKING

D Lounge, Deck 4, Midship - 12:15 p.m.

Start creating and collecting your cruise memories at this scrapbooking session. Your Cruise Staff will be on hand with a special gift for all attendees.

PORT & SHOPPING SHOW

Buena Vista Theatre, Decks 4 & 5, Forward - 1:30 p.m.

Join your Port & Shopping Guides Johan & Marissa to learn about the incredible tax and duty free shopping in St. Maarten & St. Thomas. Free Caribbean charm bracelet & ship charm for all in attendance.

THE QUEST

The Tube, Deck 4, Aft - 2:00 p.m.

Enjoy the wildest and wackiest scavenger team event on the seven seas!



ANYONE CAN COOK

D Lounge, Deck 4, Midship - 2:30 p.m.

From our galley to yours; join our chefs as they show you how to prepare delicious dishes. Today's menu: Apple Strudel.

FAMILY SUPERSTAR KARAOKE

D Lounge, Deck 4, Midship - 7:15 & 10:45 p.m.

Join your Cruise Staff in D Lounge tonight and sing along to your favorite song - fun for everyone.

FORMAL NIGHT AFTER PARTY

D Lounge, Deck 4, Midship - 9:45 p.m.

Join your Cruise Staff and "The Dreamers" as we continue the party, with special appearances from the world famous Disney characters.



ADULT ACTIVITY HIGHLIGHTS

SENSES SPA SEMINARS

Sunrise Stretch - Senses Fitness Center 7:00 a.m.

Fab Abs - Senses Fitness Center 7:30 a.m.

Body Sculpt Boot Camp (Fee Applies) - Senses Fitness Center 9:00 a.m.

Fitness Frenzy (13-17 yrs) (Fee Applies) - Senses Fitness Center 10:00 a.m.

Seminar: Introduction to Acupuncture - Outlook 10:15 a.m.

Seminar: Detox for Health & Weight Loss - Outlook 11:00 a.m.

Seminar: How to Increase Your Metabolism - Outlook 1:00 p.m.

Group Cycling - Senses Fitness Center 4:00 p.m.



TASTING SEMINARS

Champagne Tasting (21+) - Ooh La La, 12:00 p.m.

Old World Wine Tasting (21+) - Meridian, 1:30 p.m.

Please make reservations for tastings at Guest Services for a nominal fee.

Tasting Seminars are only for Guest's 21 and Older.



MIX AND MINGLE
Cove Cafe, Deck 11, Forward, 12:15 p.m.

GIANT JENGA CHALLENGE
O'Gills Pub, Deck 4, Aft, 3:00 p.m.

MIXER EVENT
Outlook, Deck 14, Midship, 10:00 p.m.



ESPN DREAM TEAM DRAFT DAY - BASEBALL

O'Gills Pub, Deck 4, Aft - 10:15 a.m.

Play ball! Join the "Commissioner" and engage in this interactive fantasy baseball draft unlike anything you've ever seen! Can YOU draft the greatest baseball team of All-Time?

LIVE PIANO MUSIC WITH CHARLIE REUTER

La Piazza, Deck 4, Aft - 7:30, 9:45 & 10:45 p.m.

Join Charlie Reuter in La Piazza this evening as he plays live for your listening pleasure, including a special "Swinging and Sailing" set at 10:45 p.m with Rat Pack inspired tunes from Frank Sinatra, Dean Martin and Sammy Davis Jr.



LONDON ROCKS!

The Tube, Deck 4, Aft - 10:45 p.m.

Hop onboard and hit the dance floor as we take you on a ride through the charts, partying it up to some of the hottest British hits!

KICKSTART BINGO

D Lounge, Deck 4, Midship

Card Sales - 10:45 a.m. Game Starts - 11:00 a.m.

Join us for our first session of Jackpot Bingo, with four CASH prizes to be won. Everyone in attendance will receive a FREE bingo card for one of the four cash prize games. Plus your chance to win a Diamond Pendant, courtesy of your Shopping Guides Johan & Marissa.

SENSES SPA JACKPOT BINGO

D Lounge, Deck 4, Midship

Card Sales - 3:30 p.m.


Game Starts - 3:45 p.m.

Four CASH prizes up for grabs plus great spa prizes to be won, including a mini facial and massages, courtesy of the Senses Spa and Salon.



	8:30	8:45	9:00	9:15	9:30	9:45	10:00	10:15	10:30	10:45	11:00	11:15	11:30	11:45	12:00	12:15	12:30	12:45	1:00	1:15	1:30
FUNNELVISION	Tarzan (G) FunnelVision								The Lion King (G) FunnelVision						Movie Challenge Poolside FunnelVision						
MOVIES	Disney Nature: African Cats (PG) Buena Vista Theatre						The Muppets (PG) Buena Vista Theatre														
CHARACTER			Mickey Dk 4, Midship	Chip & Dale Lobby Atrium	Minnie Dk 4, Midship	Woody Lobby Atrium	Mickey Dk 4, Midship	Buzz Lobby Atrium	Minnie Dk 4, Midship	Jessie Lobby Atrium							Mickey Sports Deck	Princess Gathering Lobby Atrium			
FUN FOR ALL AGES	Wake Up With Disney Jr. D Lounge		Walking Ship Tour Meet at Preludes								Bingo Pre Sales	Kick Start Jackpot BINGO D Lounge				Family Crafts - Scrapbooking D Lounge		Cruisin for Trivia D Lounge			
	Interdenominational Service Outlook			Disney Animation - Creating a Character D Lounge										Disney Vacation Club Presentation The Tube				Shopping Show Buena Vista Theatre			
	Disney Vacation Club Member Celebration The Tube				Origami Flowers La Piazza								Jack Jack's Diaper Dash Lobby Atrium								
ADULTS	Longest Drive Golf Simulator						ESPN Dream Team Draft Day O'Gills Pub				Crafts - Tile Coasters O'Gills Pub				Club 18*21 Mix & Mingle Cove Cafe		70's Music Challenge La Piazza				
ADULTS	Friends of Bill W. Outlook		Xbox™Kinect® - Wipeout O'Gills Pub				Introduction to Acupuncture Seminar Outlook				Detox for Health & Weight Loss Outlook				Champagne Tasting (21+) Ooh La La (Fee Applies)		How to Increase Your Metabolism Outlook				
Vibe	Open House				Hangin in Vibe				Zombified				Hangin in Vibe								
Edge	Open House				Hangin in Edge				Magic Show				Hangin in Edge								
Oceaneer Lab	Stitch's Adventure Squad						Piston Cup Challenge						Youth Lunch								
Oceaneer Club	Memory Wall				Tinker Bell's Talent Show				Magic Playfloor				Youth Lunch				Open House		Toy Story Boot Camp		
Out & About	Open House & Registration				Fitness Frenzy Senses Fitness Center (Fee Applies)												Clubhouse Kids				

Symbol for activities that will be repeated during the cruise

	1:45	2:00	2:15	2:30	2:45	3:00	3:15	3:30	3:45	4:00	4:15	4:30	4:45	5:00	5:15	5:30	5:45	6:00	6:15	6:30	6:45				
FUNNELVISION							Brother Bear (PG) FunnelVision						A Bugs Life (G) FunnelVision												
MOVIES							John Carter (PG-13) DOLBY 3D Buena Vista Theatre						Disney Nature: African Cats (PG) Buena Vista Theatre >7:14 p.m.												
CHARACTER	Minnie Dk 4, Midship	Max Sports Deck	Donald Sports Deck						Chip & Dale Sports Deck					Minnie Dk 4, Midship	Donald Dk 4, Midship	Mickey Dk 4, Midship									
FUN FOR ALL AGES	The Quest The Tube		Anyone Can Cook D Lounge - Apple Strudel				Bingo Pre Sales				Senses Spa Jackpot BINGO D Lounge				Captain's Reception Lobby Atrium		 Walt Disney Theatre								
	Shuffleboard Tournament Deck 4, Port Side																								
	Port & Shopping Show <1:30 p.m. Buena Vista Theatre			Live Music with "The Dreamers" Deck 12, Forward				Paper Plane Making La Piazza								Fine Whines Live Lobby Atrium									
ADULTS	Ultimate Disney Trivia La Piazza								Live Guitar Satellite Falls		Art of the Theme Show Tour Meet at Meridian														
ADULTS	Old World Wine Tasting (21+) <1:30 p.m. Meridian (Fee Applies)				18*21 Giant Jenga O'Gills Pub				Group Cycling Senses Fitness Center																
Vibe	Anyone Can Cook - Pizza						Dive into DJ'ing																		
Edge	Super Sloppy Science - Flubber						Dodgeball																		
Oceaneer Lab	Animation Cells		Get The Hook				Anyone Can Cook				Youth Dinner						Mirror, Mirror								
Oceaneer Club	Clubhouse Kids		Cruisin' With Crush								Youth Dinner						All About Animals								
Out & About	Parachute Games				Hold the Phone Meet at Deck 2, Midship																				

FOLD

OUT & ABOUT SERIES

IN THE SPOTLIGHT SERIES

SOLVE IT! SERIES


JUMP UP! SERIES

CREATE & INVENT SERIES

CLUBHOUSE SERIES

STORYBOOK SERIES

Fold along the dotted lines and take me with you so you don't miss any of the fun!

	7:00	7:15	7:30	7:45	8:00	8:15	8:30	8:45	9:00	9:15	9:30	9:45	10:00	10:15	10:30	10:45	11:00	11:15	11:30	11:45	12:00
FUNNELVISION	Finding Nemo (G) FunnelVision						Disney Nature: African Cats (PG) Buena Vista Theatre						War Horse (PG-13) Buena Vista Theatre >12:41 a.m.								
MOVIES																					
CHARACTER	Ariel Preludes		Aurora Preludes		Tiana Preludes						Minnie Preludes	Mickey Dk 4, Midship	Minnie Dk 4, Midship								
FUN FOR ALL AGES	Captain's Reception Lobby Atrium						 Walt Disney Theatre				Formal Night After Party D Lounge						Family Superstar Karaoke D Lounge				
	Lloyd Mabrey The Tube - Music & Comedy																				
	Family Superstar Karaoke D Lounge										Live Music with Fine Whines Lobby Atrium										
ADULTS									Piano After Dark La Piazza		Michael Holly The Tube - Comedy	London Rocks The Tube	Rock The Tube with Guest DJ Alex Metallic The Tube >2:00 a.m.								
ADULTS	Live Music with Charlie Reuter La Piazza								Club 18*21 Mixer Outlook		50 Movie Quotes Trivia O'Gills Pub	Live Guitar with Rob Thompson O'Gills Pub									
Vibe	ESPN Dream Team Draft Day				Smoothie Hour				Pump It up								Mirror, Mirror				
Edge					That's Hilarious!												Mirror, Mirror				
Oceaneer Lab	Stop the Bus		Disney Animation - Create A Character																		
Oceaneer Club	Once Upon a Time		Open House								Super Sloppy Science - Flubber		Magic Playfloor								
Out & About	Table Tennis Tournament Meet at Deck 13, Aft						Magic Playfloor				Make Your Own Wand				Movie Time						

SUNDAY, APRIL 22, 2012 - DAY AT SEA EARLY DAY

BUENA VISTA THEATRE



8:30 a.m., 5:45 & 8:15 p.m.
Run Time: 1 hr 29 mins Rating: PG



10:30 a.m.
Run Time: 1 hr 43 mins Rating: PG



3:00 p.m.
Run Time: 2 hrs 26 mins Rating: PG-13



10:15 p.m.
Run Time: 2 hrs 26 mins Rating: PG-13

Character Appearances

MICKEY MOUSE

Deck 4, Midship Balcony - 9:15 a.m.
Deck 4, Midship Balcony - 10:15 a.m.
Goofy's Sports Deck - 1:00 p.m.
Deck 4, Midship Balcony - 5:45 p.m.
Deck 4, Midship Balcony - 7:45 p.m.
Deck 4, Midship Balcony - 9:45 p.m.

CHIP & DALE

Lobby Atrium - 9:30 a.m.
Lobby Atrium - 10:30 a.m.
Goofy's Sports Deck - 3:30 p.m.

BUZZ LIGHTYEAR

Lobby Atrium - 9:30 a.m.
Lobby Atrium - 10:30 a.m.

MINNIE MOUSE

Deck 4, Midship Balcony - 9:45 a.m.
Deck 4, Midship Balcony - 10:45 a.m.
Deck 4, Midship Balcony - 4:45 p.m.
Deck 4, Midship Balcony - 7:15 p.m.
Deck 4, Midship Balcony - 9:30 p.m.

ARIEL

Goofy's Sports Deck - 2:00 p.m.
Deck 4, Midship Balcony - 4:45 p.m.
Deck 4, Midship Balcony - 7:15 p.m.

AURORA

Deck 4, Midship Balcony - 1:45 p.m.
Deck 4, Midship Balcony - 4:45 p.m.
Deck 4, Midship Balcony - 7:15 p.m.

PRINCESS TIANA

Deck 4, Midship Balcony - 1:45 p.m.
Deck 4, Midship Balcony - 4:45 p.m.
Deck 4, Midship Balcony - 7:15 p.m.

For details of daily Disney character appearances, refer to the character line on the Navigator Grid, or the digital character board in the Lobby Atrium.

YOUTH ACTIVITIES THEMED EXPERIENCES

- CLUBHOUSE SERIES** focuses on movement and features content which appeals to younger children.
- STORYBOOK SERIES** is designed with a strong connection to the Disney classic stories.
- JUMP UPI SERIES** includes large ground games & movement-oriented activities.
- CREATE & INVENT SERIES** will have a tactile focus allowing children to create and admire their work.
- IN THE SPOTLIGHT SERIES** focuses on children's stage presence with lots of activities and enthusiasm.
- SOLVE IT! SERIES** are less active, but will challenge children with problem/solutions-based activities.
- OUT & ABOUT SERIES** Set outside secured Youth Activities spaces, very active, appealing to Tweens. Recommended 8 - 14 years

SHIP DIRECTORY

YOUTH ACTIVITIES	9:00 A.M. - 12:00 MID.
Disney's Oceaneer Club	9:00 A.M. - 1:00 A.M.
Disney's Oceaneer Lab	10:00 A.M. - 1:00 P.M.
EDGE	9:00 A.M. - 11:00 P.M.
It's A Small World Nursery	10:00 A.M. - 2:00 P.M.
VIBE	

RECEPTION

AquaDuck	Deck 12, Mid	9:00 A.M. - 10:00 P.M.
Animalia	Deck 12, Aft	9:00 A.M. - 7:00 P.M.
Donald's Pool	Deck 11, Mid	7:30 A.M. - 11:00 P.M.
Goofy Golf	Deck 13, Aft	8:00 A.M. - 10:00 P.M.
Golf & Sports Simulators	Deck 18, Aft	9:00 A.M. - 6:00 P.M.
Goofy's Sports Deck	Deck 12, Aft	9:00 A.M. - 6:00 P.M.
Mickey's Pool	Deck 11, Mid	6:00 A.M. - 11:00 P.M.
Mickey's Slide	Deck 11, Mid	9:00 A.M. - 6:00 P.M.
Mudshp Detective Agency	Decks 2 & 5, Mid	9:00 A.M. - 9:00 P.M.
Nemo's Reef	Deck 11, Mid	9:00 A.M. - 7:00 P.M.
Port Adventures Desk	Deck 5, Mid	9:00 A.M. - 5:00 P.M.
Quiet Cove Pool	Deck 11, Fwd	7:00 P.M. - 8:30 P.M.
Shelute Falls	Deck 13, Fwd	6:00 A.M. - 6:30 P.M.
Senses Fitness Center	Deck 11, Fwd	6:30 A.M. - 10:00 P.M.

GENERAL INFORMATION

Arr-CADE	Deck 11, Aft	24 Hours
Disney Vacation Club	Deck 4, Mid	2:30 P.M. - 10:00 P.M.
Furute Cruise Sales Desk	Deck 4, Mid	9:00 A.M. - 12:00 P.M.
Guest Services	Deck 3, Mid	3:00 P.M. - 6:00 P.M.
Medical Health Center	Deck 1, Fwd	7:30 P.M. - 8:30 P.M.
Port & Shopping Desk	Deck 4, Mid	24 Hours
Predures	Deck 3, Fwd	9:30 A.M. - 11:00 A.M.
Senses Spa and Salon	Deck 11, Fwd	4:30 P.M. - 7:00 P.M.
Suitcases Photo Gallery	Deck 4, Mid	7:30 P.M. - 8:30 P.M.
Shutters Digital	Deck 4, Mid	8:00 P.M. - 8:45 P.M.
		8:00 A.M. - 10:00 P.M.
		10:00 A.M. - 11:00 P.M.
		24 Hours

SHOPPING

Bibbidi Bobbidi Boutique	Deck 5, Mid	9:00 A.M. - 9:00 P.M.
Mickey's Mainsail	Deck 3, Fwd	9:00 A.M. - 10:00 P.M.
OUACKS	Deck 11, Mid	10:00 A.M. - 4:00 P.M.
SEA TREASURES	Deck 3, Fwd	9:00 A.M. - 10:00 P.M.
VISTA GALLERY	Deck 4, Mid	1:00 P.M. - 10:00 P.M.
WHITECAPS	Deck 3, Fwd	9:00 A.M. - 10:00 P.M.
WHOZITS & WHATZITS	Deck 11, Mid	10:00 A.M. - 4:00 P.M.

DINNER MENU

Animator's Palace Pacific Rim Cuisine
Enriched Garden Continental Market Cuisine
Royal Court French Cuisine
Dining Times: 5:45pm & 8:15pm

DRINK OF THE DAY
(Alcoholic)
Coco Ball
(Non Alcoholic)
WEATHER FORECAST
Monday: Party Cloudy
High: 73°F/23°C
Low: 62°F/18°C

DINING & LOUNGES

RESTAURANT

CABANAS CONTINENTAL	Deck 11, Aft	7:00 A.M. - 7:30 A.M.
CABANAS	Deck 11, Aft	7:30 A.M. - 10:45 A.M.
ENCHANTED GARDEN	Deck 2, Mid	9:00 A.M. - 10:45 A.M.
ROYAL COURT	Deck 3, Mid	8:00 A.M. - 9:30 A.M.

LUNCH

CABANAS	Deck 11, Aft	12:00 P.M. - 2:00 P.M.
ENCHANTED GARDEN	Deck 2, Mid	12:00 P.M. - 1:30 P.M.
FILMORE'S FAVORITES	Deck 11, Mid	11:00 A.M. - 6:00 P.M.
LUIGI'S PIZZA	Deck 11, Mid	11:00 A.M. - 6:00 P.M.
ROYAL COURT	Deck 3, Mid	12:00 P.M. - 1:30 P.M.
TOW MATERS GRILL	Deck 11, Mid	11:00 A.M. - 11:00 P.M.

DINNER

ANIMATOR'S PALATE	Deck 3, Aft	5:45 P.M. & 8:15 P.M.
ENCHANTED GARDEN	Deck 2, Mid	5:45 P.M. & 8:15 P.M.
ROYAL COURT	Deck 3, Mid	5:45 P.M. & 8:15 P.M.
CABANAS TABLE SERVICE	Deck 11, Aft	6:30 P.M. - 8:30 P.M.

LATE NIGHT SNACK

LA PIAZZA (8+)	Deck 4, Aft	10:45 P.M. - 11:45 P.M.
Luigi's Pizza	Deck 11, Mid	9:30 P.M. - 12:30 A.M.

ADDED FEATURES

BEVERAGE STATION	Deck 11, Mid	24 Hours
EYE SCREAM	Deck 11, Mid	11:00 A.M. - 11:00 P.M.
ROOM SERVICE	DIAL 0	24 Hours

ENTERTAINMENT - LOUNGE - BAR

Adults must be 21 and older to consume alcoholic beverages.		
BON VOYAGE	Deck 3, Mid	9:00 A.M. - 11:00 P.M.
COVE BAR (18+)	Deck 11, Fwd	9:30 A.M. - 10:30 P.M.
COVE CAFE (18+)	Deck 11, Fwd	7:00 A.M. - 12:00 MID.
CURRENTS (18+)	Deck 13, Fwd	10:00 A.M. - 11:00 P.M.
D LOUNGE	Deck 4, Mid	Show Times
FROZONE	Deck 11, Mid	11:00 A.M. - 11:00 P.M.
LA PIAZZA	Deck 4, Aft	12:30 P.M. - 12:30 A.M.
MERIDIAN (18+)	Deck 12, Aft	5:00 P.M. - 12:30 A.M.
O'GILLS PUB	Deck 4, Aft	1:00 P.M. - 1:00 A.M.
O'OH LA LA (18+)	Deck 4, Aft	5:00 P.M. - 1:00 A.M.
OUTLOOK	Deck 14, Mid	SUNSET
SKYLINE (18+)	Deck 4, Aft	5:00 P.M. - 1:00 A.M.
THE TUBE (18+)	Deck 4, Aft	10:00 P.M. - 2:00 A.M.
VISTA CAFE	Deck 4, Mid	7:30 A.M. - 11:00 P.M.
WAVES	Deck 12, Aft	10:30 A.M. - 6:30 P.M.

Consumers who order raw or partially cooked, ready-to-eat food of animal origin, are hereby informed that the food is not sufficiently cooked to ensure its safety.



There's a Muppet mystery onboard, and Pepe needs YOU to search the ship for clues and use our special detective "badge" to catch the culprit!

9:00 a.m. - 9:00 p.m.
Decks 2 & 5, Midship

IMPORTANT NUMBERS
First Security: 7-3001
Medical Emergency: 7-3000
Health Center: 7-1923

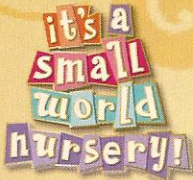
YOUTH ACTIVITIES HIGHLIGHTS

DINE & PLAY

A convenience for families dining at 8:15 p.m., our Youth Activities Counselors will be available at 9:15 p.m. at the entrance of Royal Court, Enchanted Garden and Animator's Palate dining rooms to bring registered children to join the fun in the Youth Activity areas.

CLUBHOUSE KIDS

Is a structured play time offered during secured programming, and is recommended for children ages 3-7. During Clubhouse Kids time in the Oceaneer Club Counselors will be able to interact and encourage the youngest cruisers in specific activities, ensuring they are engaged.



Deck 5 Midship (7-5864) 9:00 a.m. - 11:00 p.m.

OPEN HOUSE

8:00 - 9:00 a.m.

Your chance to see our toddler space, It's A Small World Nursery.



Deck 5 Midship (7-1440) 9:00 a.m. - 12:00 Mid.
(3 - 12 years old)

TOY STORY BOOT CAMP

1:00 p.m.

Ten-hut! The Green Army Men are holding a boot camp and your junior cruiser is invited to join in the fun.

ONCE UPON A TIME

7:30 p.m.

Join Beverley the Bookmaker for a magical, musical story time featuring a Disney Princess!



Deck 5 Midship (7-1445) 9:00 a.m. - 1:00 a.m.
(3 - 12 years old)

STITCH'S ADVENTURE SQUAD

9:30 a.m.

Stitch, everyone's favorite alien, is making an appearance to share some of his mischievous games and activities.

GET THE HOOK

3:00 p.m.

A villainous villain has stolen Captain Hook's prized golden hook. Become a member of the Top Detective Agency and help solve the clue's to retrieve Hook's hook.



Deck 13 Midship (41-14426) 10:00 a.m. - 1:00 a.m.
(11 - 14 years old)

MIRROR, MIRROR GAME SHOW

11:45 p.m., D Lounge, Deck 4, Midship

It's time to play the fairest game show of them all, Mirror, Mirror. Whether you're Happy, Grumpy or even Dopey you'll love competing for all the apples!



Entrance on Deck 4 Forward (7-9418)

10:00 a.m. - 2:00 a.m.
(14 - 17 years old)

ZOMBIFIED

11:00 a.m.

Help the Production Assistant to rally the teens and complete this big shot Hollywood production.

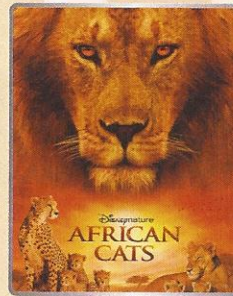
ANYONE CAN COOK - PIZZA

2:30 p.m.

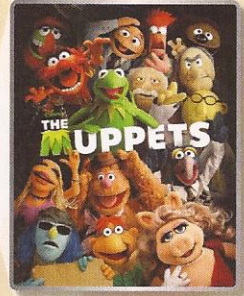
Anyone can cook as we work together to create some of our favorite treats.

BUENA VISTA THEATRE

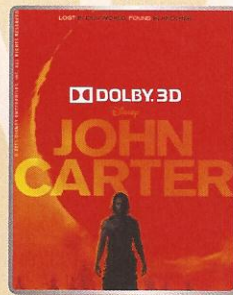
Today's Movies



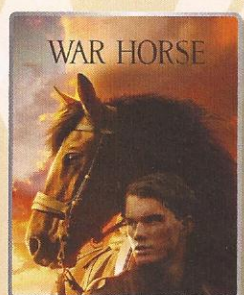
8:30 a.m., 5:45 & 8:15 p.m.
Run Time: 1 hr 29 mins
Rating: PG



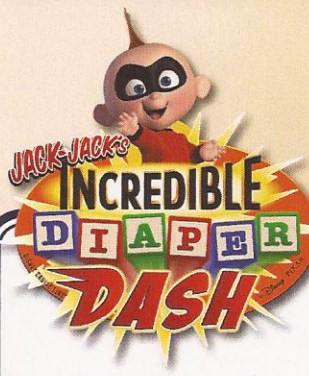
10:30 a.m.
Run Time: 1 hr 43 mins
Rating: PG



3:00 p.m.
Run Time: 2 hrs 26 mins
Rating: PG-13

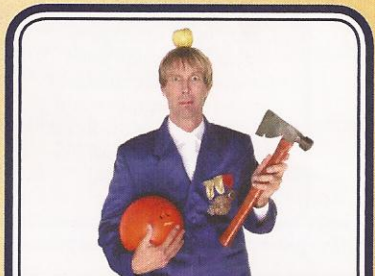


10:15 p.m.
Run Time: 2 hrs 26 mins
Rating: PG-13



Calling all baby cruisers!
The Disney Fantasy's babies take to the mat to see who's the fastest crawler of the seven seas!

**Lobby Atrium,
Deck 3, Midship
11:00 a.m.**



ADULT CABARET

Featuring the
Comedy & Juggling of
Michael Holly, as he
entertains you in this
adult Cabaret-Style show.

**The Tube (18+),
Deck 4, Aft
10:15 p.m.**

YOUTH ACTIVITIES OPEN HOUSE

Open House is an opportunity for all to come and participate in a variety of exciting activities and free time in the Oceaneer Club, Lab, Edge and Vibe throughout the cruise. During these times secured programming will still be offered in the other venue for those looking to check their children into care.

MORE TO ENJOY WHILE ONBOARD

ONBOARD AIRLINE CHECK IN

If you would like to have your boarding passes printed for you onboard and have your luggage taken to the airport, register by Wednesday. If you have Disney Cruise Line airport transfer to Orlando International Airport and fly with one of the participating airlines. Please stop at Guest Services, Deck 3, Midship.



DISNEY VACATION CLUB® GROUP PREVIEW

Want to learn more about taking magical vacations year after year? Please see a Disney Vacation Club representative on Deck 4, Mid-Ship, or call 7-2805 from your stateroom phone for more information about our interactive group presentation.



PORT & SHOPPING SHOW

Join your Shopping Guides Johan & Marissa to learn about the incredible tax & duty free shopping in St. Maarten & St. Thomas. All in attendance will receive a FREE Caribbean charm bracelet, ship charm & be entered to win a Diamond Pendant! 1:30 p.m. Buena Vista Theatre, Decks 4 & 5, Forward.



SENSES
SPA & SALON

ACUPUNCTURE

Acupuncture allows your body to heal itself. Acupuncture is comforting to the mind and body and has been proved to be effective over 100 conditions. \$150 and 60 minutes

Call Senses Spa & Salon, 7-1465

TODAY'S SHOPPING SPECIAL

Stop by Whitecaps to try on the world's most memorable white diamond pieces and commemorate your cruise. Ask the hosts about 50% savings off US retail. Whitecaps, Deck 3, Forward.



Shutters

FORMAL PORTRAITS TONIGHT!

Moon, Mural & Bow - Six guests maximum please
Grand Staircase & Minnie Statue - Groups accommodated

5:00 p.m. - 6:00 p.m.

7:15 p.m. - 8:30 p.m.

9:30 p.m. - 10:30 p.m.

**Please note that photos are available for viewing on our interactive photo kiosks approximately five hours after being taken and are only available for purchase during this cruise.*

SURF @ SEA

\$0.75 per minute, or save money by buying blocks of time. \$55.00 for 100 minutes, \$100.00 for 250 minutes and \$150.00 for 500 minutes. Wireless information sheets are available at Guest Services, Deck 3, Midship.

Please note: Due to satellite connectivity, onboard internet service will be noticeably slower than you may be accustomed to and may at times be interrupted or unavailable.

ON DEMAND TV

Watch Disney movies, Hollywood features, ABC Shows, and even captioned content, plus much more "On Demand" for FREE in the comfort of your stateroom! Bookmark your movie and come back to watch it later. Press MENU on your stateroom television remote control, and follow the prompts.



PLAN YOUR NEXT CRUISE TODAY

Book your next cruise today for the best availability and pricing. You'll save 10%, receive up to a \$200 onboard credit, and pay a reduced deposit! Tune to Channel 8 on your stateroom TV for details, visit the Future Cruise Sales Desk, Deck 4 Midship, or call 7-2848.

Disney Cruise Line PORT ADVENTURES

Port Adventures provide you and your family with the very best recreation, leisure and sightseeing in St. Maarten, St. Thomas and Castaway Cay. Whether sailing into the horizon on the Golden Eagle Catamaran, exploring coral reefs on the Captain Nautica Snorkeling Expedition, flying high on a parasailing adventure or just kicking back and relaxing on an Island tour. Whatever it is you choose to do, there is adventure waiting for you in each port. Visit our friendly Port Adventures Team located Deck 5, Midship, for reservations and questions about these and many other offerings.

SHOPPING

RED CARPET SOPHIA FIORI DIAMOND UNVEILING

Meet Sophia Fiori's director of sales, "Diamond Jeff" and find out why Sophia Fiori is Hollywood's first choice for the Emmy's, Golden Globes, and Oscars. THIS WEEK ONLY Sophia Fiori has brought over \$3 Million in blue, white, and vivid colored diamonds to hit the high seas. All at duty and tax free prices of up to 50% off US retail, from affordable everyday jewelry to high end connoisseur diamonds. Reserve your favorite Sophia Fiori signature ring before they sell out. Choose from circle of life pendants, diamond studs, hoops, to Sophia Fiori signature collection pieces to commemorate your Caribbean vacation. Whitecaps 10:30 a.m., Deck 3, Forward.

BIBBIDI BOBBIDI BOUTIQUE

Your princess smile lasts a lifetime. The Bibbidi Bobbidi Boutique gives your princess Pixie Dust and courage. Fairy Godmother has selected her best trainees to make fairy tale wishes a reality. The Boutique is located on Deck 5, Midship, across from the Port Adventures Desk. Call ext.9438 or stop by to make a reservation.

FANTASY AND INAUGURAL SAILING APPAREL

Check out the amazing array of products from baseball caps, pins to t-shirts available in Sea Treasures, Mickey's Mainsail and Whitecaps, Deck 3, Forward.

WHOZITS AND WHATZITS

It's your next door shop while enjoying the sun and the pool. Come and visit us for all your AquaDuck souvenirs, swim wear and accessories! Deck 11, Midship, available from 10:00 a.m. to 4:00 p.m.

QUACKS

It's the place to go for this day at sea! Check out our outdoor station with these new and great value t-shirts, and make them part of your souvenirs for this cruise! Available from 10:00 a.m. to 4:00 p.m. on the main pool area on Deck 11, Aft.

Due to port regulations, when the ship is docked, the stores will remain closed.

IMPORTANT INFORMATION

Security Notice

All Guests (including children) who wish to disembark the ship are required to present their Key to the World card at the gangway. A photo ID is also required for those Guests who are 18 years of age or older. Guests under the age of 18 are required to have a Parent, Guardian or other responsible adult sign an authorization form at the time it is given out if they wish to go ashore unaccompanied. Authorization forms are available at the gangways and Guest Services.

Please Note:

Please remember to use plenty of sunscreen and mosquito repellent when venturing ashore.

Cold and Flu Reminder

Please wash hands frequently and thoroughly, particularly before meals. Contact the Health Center by dialing 7-1923, should anyone in your party become ill.

Corridor Quiet Hours

As a courtesy to all our Guests, please recognize quiet hallway hours from 10:00 p.m. til 8:00 a.m.

Inclement Weather

For the safety of all Guests, outdoor events may be changed due to unforeseen weather conditions.

Environmental Message

With Disney's commitment to the Environment, please refrain from throwing anything over the Ship's side. Thank you!

No Reserved Seats Policy

As a courtesy to all our Guests, we kindly advise that the saving of seats is not permitted in the Walt Disney Theatre, and the saving of the sun loungers is not permitted on Deck 11, 12, and 13. Items left unattended will be returned to lost and found at Guest Services, Deck 3 Midship.

Smoking

For the comfort of our guests the following areas are designated as Smoking areas: - Promenade Deck (Deck 4), smoking is permitted Port Side, Aft only from 6:00 p.m. to 6:00 a.m.
- Currents - Deck 13, Forward, Port Side.
- Meridian Bar - Deck 12, Aft, Port Side, outside.
- Smoking is permitted on stateroom verandahs. Smoking is prohibited inside all guest staterooms. Guests found smoking in their staterooms will be charged a \$250 stateroom recovery fee.

Walt Disney Theatre

Theatrical performances may use artificial fog, strobe lights, pyrotechnics and other special effects. For the safety of our performers and the comfort of those around you, the use of any photography, video recording device or any electronic equipment is prohibited.

Verandah Safety

Please do not leave any combustible materials on your balcony when not present in your stateroom for safety reasons.

DF/BD/7E/003/4.21.12/RD/©DISNEY